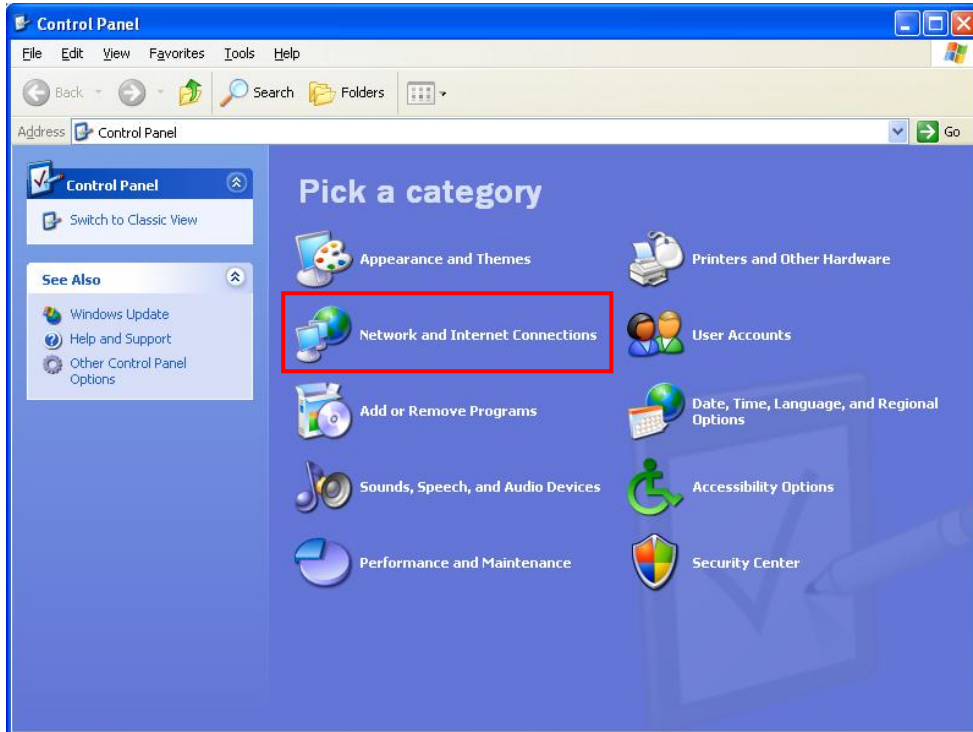


# SETUP WIFI CLIENT FAF CUNI FOR NETWORK EDUROAM

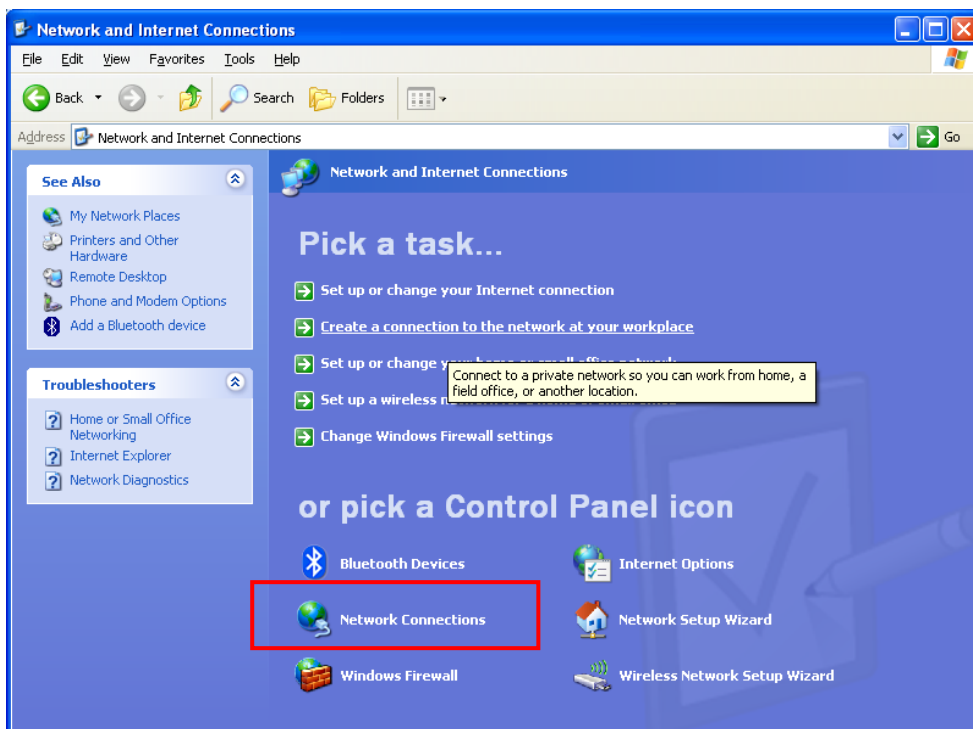
---

For operation system MS Windows XP

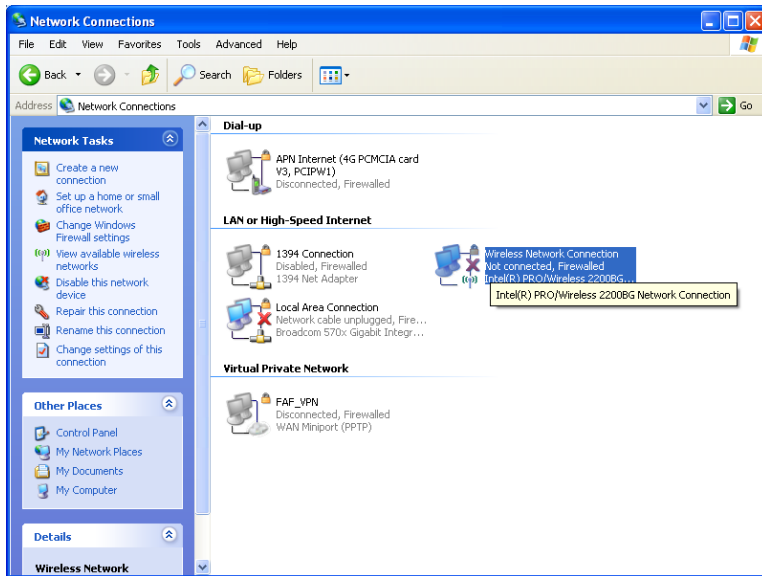
*Click Start, Control Panel, Network and Internet Connections*



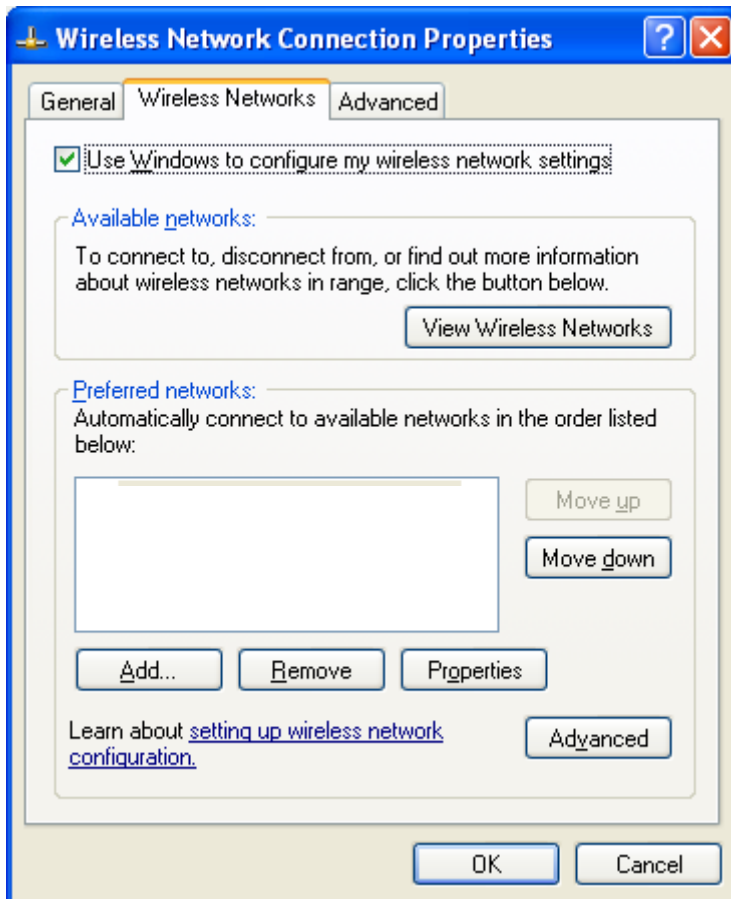
*In **Network and Internet Connections** window choose **Network Connections***



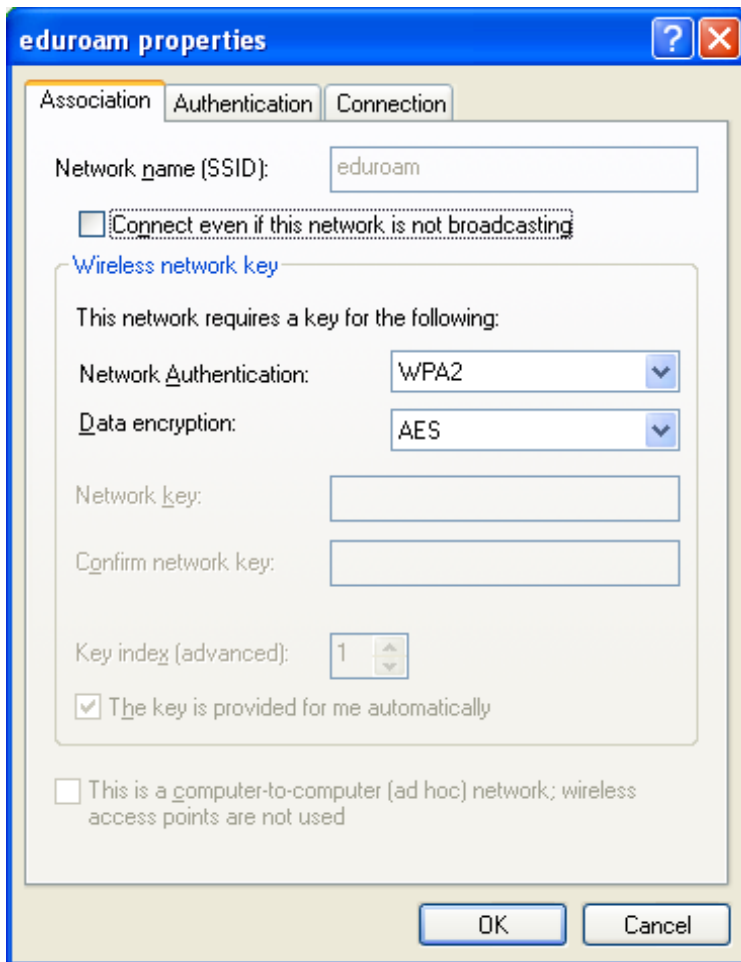
Click right mouse button **Wireless Network Connection**, choose **Properties**



In **Wireless Network Connection Properties** window click the bookmark **Wireless Networks**, in section **Preferred networks** click **Add...**

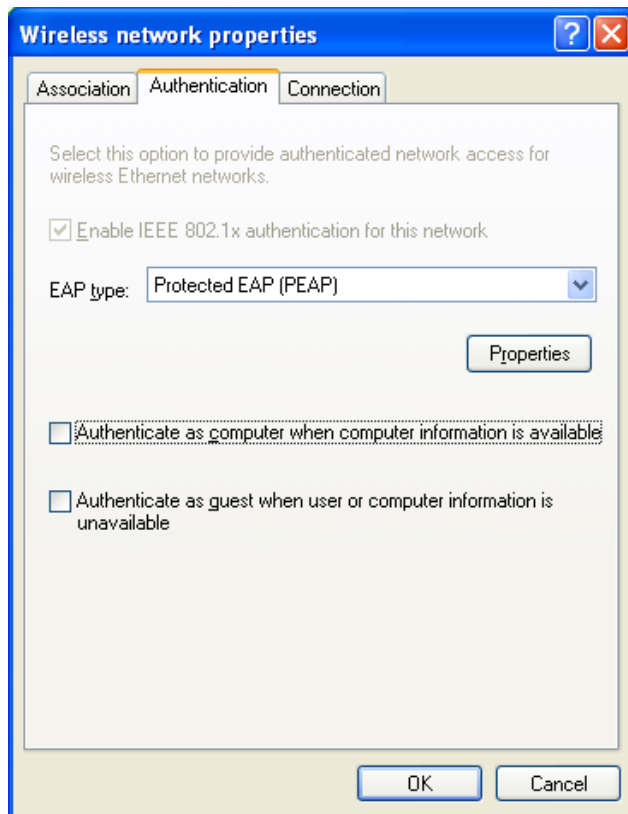


In a new window fill in **eduroam** into Network name, next choose **WPA2, AES**



Continue click to bookmark **Authentication**

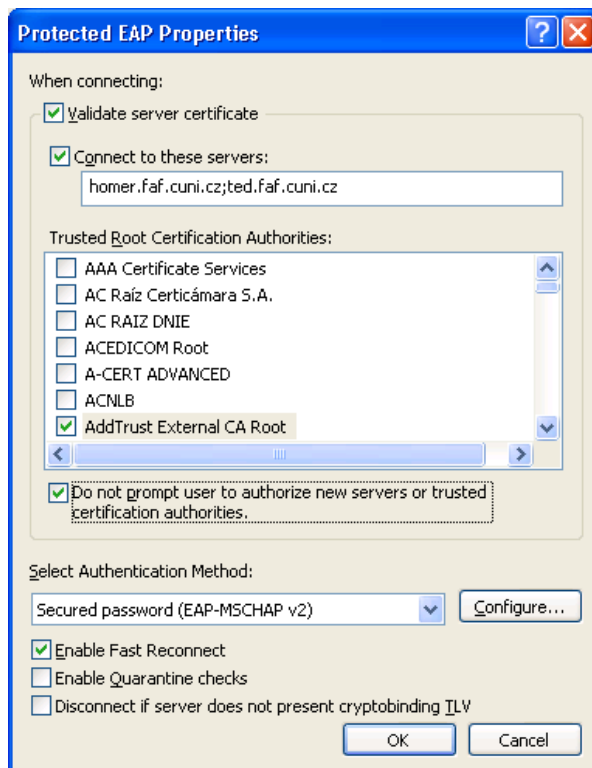
In **Wireless network properties** window, bookmark **Authentication**, choose **Protected EAP (PEAP)**



Click the button **Properties**

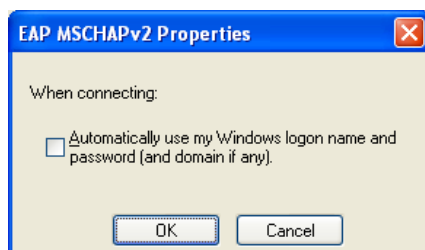
In new window **Protected EAP Properties**:

1. Select **Validate server certificate** option
2. Select **Connect to these servers:** fill in **homer.faf.cuni.cz;ted.faf.cuni.cz** option
3. Select **AddTrust Exrternal CA Root** options
4. Select **Do not prompt user to authorize new servers or trusted certification authorities** option
5. Select **Enable Fast Reconnect**

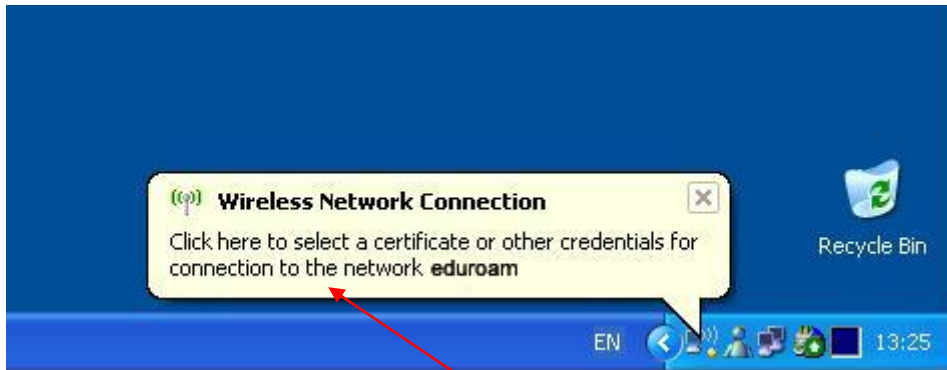


Click the button **Configure....**

In a new window **EAP MSCHAPv2Properties** **do not select** checkbox **Automatically use my Windows ...**



Continue **OK, OK, OK, OK.**



**!** Click left mouse button, show credentials dialog

Fill in your credentials and click OK

**Enter Credentials**

User name:

Password:

Logon domain:

Save this user name and password for future use

OK Cancel